

SPEC SHEET + MEASUREMENTS

SPORT-TEK

Sport-Tek® Women's Sport-Wick® Stretch Full-Zip Cadet Jacket. LST857

Product photo



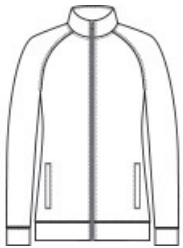
This moisture-wicking full-zip cadet jacket will help you stand out at the game.

- 6.8-ounce, 90/10 poly/spandex
- Raglan sleeves
- Side slash pockets
- Tag-free label

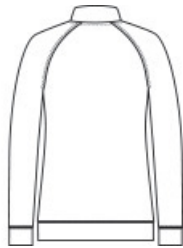
CARE INSTRUCTIONS

Machine Wash Cold With Like Colors. Do Not Use Fabric Softener. Do Not Bleach. Tumble Dry Low. Cool Iron If Necessary. Do Not Dry Clean.

Sketches



front



back

SPEC SHEET + MEASUREMENTS

SPORT-TEK

Sport-Tek® Women's Sport-Wick® Stretch Full-Zip Cadet Jacket. LST857

PRODUCT MEASUREMENTS

	XS	S	M	L	XL	XXL	3XL	4XL
Size	2	4/6	8/10	12/14	16/18	20/22	24/26	28/30
Body Length at Back	25 1/2	26	26 1/2	27	27 1/2	28	28 1/2	29
Bust	17 1/2	18 1/2	19 1/2	21	22 1/2	24	26	28
Raglans and Dolmans Sleeve Length	31 1/2	32	32 1/2	33 1/8	33 3/4	34 3/8	34 3/4	35 1/8

Body Length at Back: Measured from high point shoulder to finished hem at back.

Bust: Measured across the chest one inch below armhole when laid flat.

Raglans and Dolmans Sleeve Length: Measure from neck edge to finished hem.

SIZE CHARTS

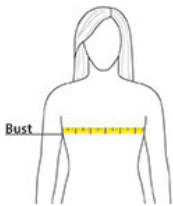
	XS	S	M	L	XL	XXL	3XL	4XL
Size	2	4/6	8/10	12/14	16/18	20/22	24/26	28/30
Bust	32-34	35-36	37-38	39-41	42-44	45-47	48-51	52-55

SPEC SHEET + MEASUREMENTS



Sport-Tek® Women's Sport-Wick® Stretch Full-Zip Cadet Jacket. LST857

HOW TO MEASURE



BUST

Measure under the arm and around the fullest part of the bust with arms down, keeping tape horizontal.

COLORS



Black
PMS BLACK
C



Charcoal Grey



Charcoal Grey
Heather



Deep Red
PMS 201C



True Navy
PMS 533C



True Royal
PMS 7687C